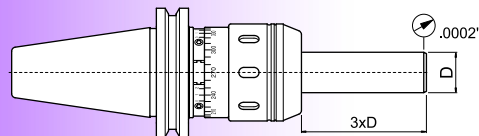


Force

Issue 16

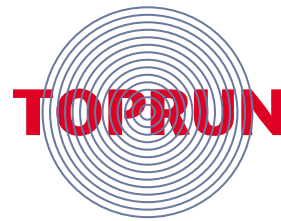
Milling Chucks

- Ultra High Rigidity
- Improved tightening power over standard collet chucks
- Tough enough for roughing, accurate enough for finishing
- Balanceable for high speed machining
- Greater shank contact resulting in reduced vibration
- Axial accuracy:
concentricity $\leq .0002''$ at 3 x D

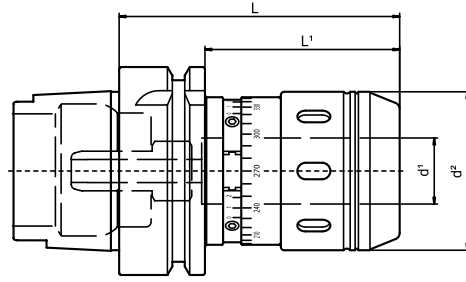


- No overtightening; built in torque
- Permits increased cutting rates and improved tool life
- Select Inch and Metric Milling Chucks available
- Inch to Inch, Metric to Metric & Metric to Inch straight collets available

* Inch to Metric available upon request



HSK-A

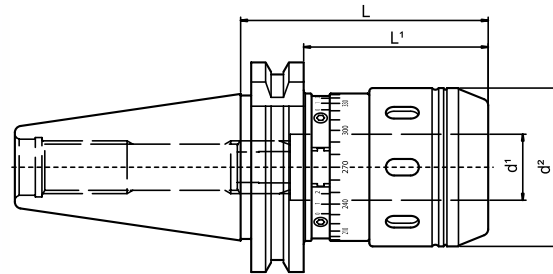


DESIGNATION	Shank Taper	d ¹	d ²	L	L ¹	KG
HSK-A63MC-20MM-TR	A63	20mm	1.89	3.35	2.32	1.2
HSK-A63MC-32MM-TR	A63	32mm	2.60	4.33	---	1.9
HSK-A100MC-32MM-TR	A100	32mm	2.60	4.33	3.19	3.6

Wrench: for d¹ = 20mm, use 10.150.04.0.0050 ~ for d¹ = 32mm, use 10.150.04.0.0075

Wrenches and Collets sold separately

DIN 69871-A



DESIGNATION	Shank Taper	d ¹	d ²	L	L ¹	KG
DIN40MC-20MM-TR	40	20mm	1.89	2.95	2.17	1.3
DIN40MC-32MM-TR	40	32mm	2.60	4.13	3.35	1.8
DIN50MC-32MM-TR	50	32mm	2.60	3.94	3.15	3.0

Wrench: for d¹ = 20mm, use 10.150.04.0.0050 ~ for d¹ = 32mm, use 10.150.04.0.0075

Wrenches and Collets sold separately

