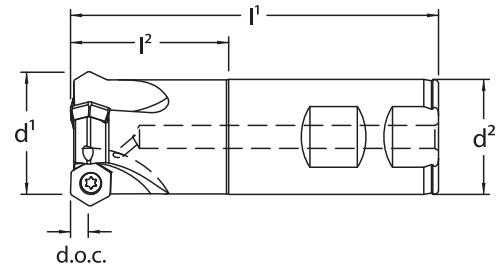


THP60

Milling Cutters

The newly developed THP60 end and face mills offer exceptional, economical performance for general face milling applications. End mills and face mills from 2" diameter to 4" diameter are MaxiCool™ enabled giving further benefit of increased performance.

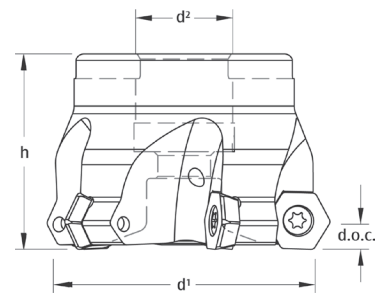
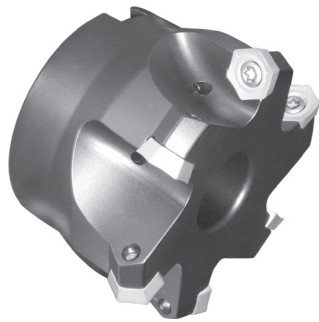
With inserts having an economical 6 cutting edges, together with Widia proven milling grades, all material groups are covered to take profitability to the next level.



End Mills with Coolant Through

Designation	d ¹	d ²	l ¹	l ²	d.o.c.	flutes	Insert	Insert Screw	Wrench
THP60-1250-C	1.250	1.250	4.00	1.72	.189	3	HPGT-06T3... HPPT-06T3...	214.80.388	214.80.824 (S/D) 214.80.012 (F/T)
THP60-1500-C	1.500	1.250	4.00	1.72	.189	4			

Remember to use COPASLIP® anti-seize compound on all insert screws



Face Mills with Coolant Through

Designation	d ¹	d ²	h	d.o.c.	flutes	lbs	Insert	Insert Screw	Wrench
Through Coolant Enabled							HPGT-06T3... HPPT-06T3...	214.80.388	214.80.824 (S/D) 214.80.012 (F/T)
THP60-2000-MC	2.000	.750	1.50	.189	5	.70			
THP60-2500-MC	2.500	1.000	1.75	.189	6	1.45			
THP60-3000-MC	3.000	1.000	2.00	.189	7	2.30			
THP60-4000-MC	4.000	1.250	2.00	.189	9	3.85			
Standard Non-Through coolant							HPGT-06T3... HPPT-06T3...	214.80.388	214.80.824 (S/D) 214.80.012 (F/T)
THP60-4000	4.000	1.500	2.00	.189	9	3.40			
THP60-5000	5.000	1.500	2.00	.189	10	5.25			
THP60-6000	6.000	1.500	2.00	.189	12	7.85			

Remember to use COPASLIP® anti-seize compound on all insert screws

THP60

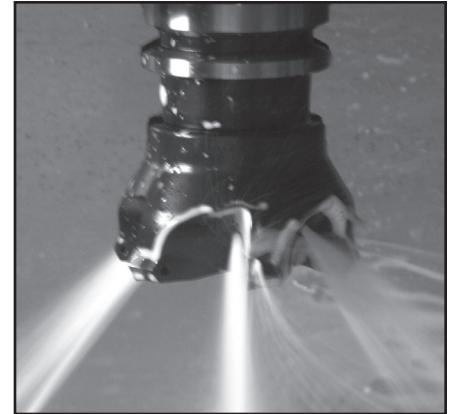
Inserts for THP60 Milling Cutters

Featuring:

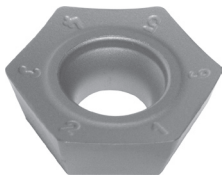
- differential pitch insert spacing to provide exceptionally smooth cutting action
- through coolant capable
- minimal axial and radial run-out
- four insert geometries

Available in 7 grades:

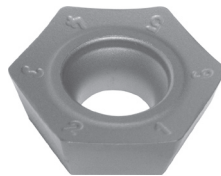
- 4 coated carbide grades
- 2 uncoated carbide grades
- 1 cermet grade



LD



GD



AL



3W



LD - for light machining

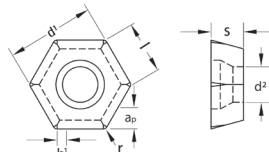
GD - for general face milling in steels and cast irons

AL - optimized for aluminum applications

3W - wiper insert geometry when exceptional surface finish is required (3 wiper edges)

Insert Style / Combination

	Material	Insert	Insert style / combination	ap max (inch)	fz max (inch)	Vc max (RPM)
	Al	HPGT-06T3DZFR-LDAL		.118	.016	8,000
	steel & cast iron	HPGT-06T3DZER-LD		.118	.010	
		HPGT-06T3DZEN-GD & HPGT-06T3DZER-GD3W		.180	.010	
		HPGT-06T3DZEN-GD		.180	.010	
		HPPT-06T3DZEN-GD		.180	.014	



THP60 Inserts

Designation	l	s	r	d ¹	d ²	ap	b ¹	THP60 Grades											
								TN7525	TN6525	TN7535	TN6540	TN5515	TN6501	TN6502	TN6510	TN6520	TN2510	TTM	THM
HPPT-06T3DZEN-GD	.236	.156	.039	.433	.173	.180	-	●	●	●									
HPGT-06T3DZEN-GD	.236	.156	.039	.433	.173	.180	-	●	●	●				●					●
HPGT-06T3DZEN-GD3W*	.236	.156	.039	.433	.173	.180	.157	●	●	●				●					●
HPGT-06T3DZER-LD	.236	.156	.039	.433	.173	.118	.098	●	●	●				●					●
HPGT-06T3DZFR-LDAL	.236	.156	.039	.433	.173	.118	.079									●	●		

*only use in combination with HPGT...GD