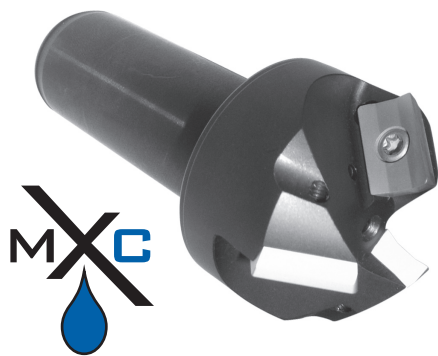
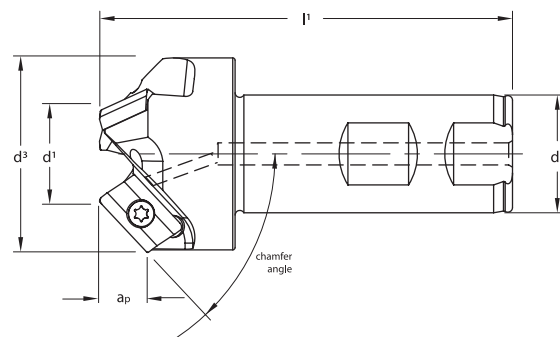


Chamfer Mills with Coolant



New Addition!



30° Chamfer Mills with Coolant Through

Designation	d ¹	d ²	d ³	l ¹	Max. ap	flutes	Insert	Insert Screw	Wrench
TXP30-0750-CH	.750	.750	1.275	3.00	.50	2	222.79.400 222.79.500 222.79.510	214.80.388	214.80.824 (S/D) 214.80.012 (F/T)
TXP30-1000-CH	1.000	1.000	1.525	3.50	.52	3			
TXP30-1250-CH	1.250	1.250	1.775	3.50	.52	3			

Remember to use COPASLIP® anti-seize compound on all insert screws

41° Chamfer Mills with Coolant Through

Designation	d ¹	d ²	d ³	l ¹	Max. ap	flutes	Insert	Insert Screw	Wrench
TXP41-0688-CH	.688	.750	1.375	3.00	.68	2	222.79.400 222.79.500 222.79.510	214.80.388	214.80.824 (S/D) 214.80.012 (F/T)
TXP41-0938-CH	.938	1.000	1.625	3.50	.68	3			
TXP41-1188-CH	1.188	1.250	1.875	3.50	.68	3			

Remember to use COPASLIP® anti-seize compound on all insert screws

45° Chamfer Mills with Coolant Through

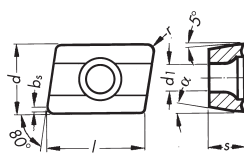
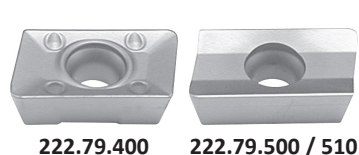
Designation	d ¹	d ²	d ³	l ¹	Max. ap	flutes	Insert	Insert Screw	Wrench
TXP45-0688-CH	.688	.750	1.425	3.00	.73	2	222.79.400 222.79.500 222.79.510	214.80.388	214.80.824 (S/D) 214.80.012 (F/T)
TXP45-0938-CH	.938	1.000	1.675	3.50	.73	3			
TXP45-1188-CH	1.188	1.250	1.925	3.50	.73	3			

Remember to use COPASLIP® anti-seize compound on all insert screws

60° Chamfer Mills with Coolant Through

Designation	d ¹	d ²	d ³	l ¹	Max. ap	flutes	Insert	Insert Screw	Wrench
TXP60-0500-CH	.500	.750	1.355	3.00	.85	2	222.79.400 222.79.500 222.79.510	214.80.388	214.80.824 (S/D) 214.80.012 (F/T)
TXP60-0750-CH	.750	1.000	1.605	3.50	.85	3			
TXP60-1000-CH	1.000	1.250	1.855	3.50	.85	3			

Remember to use COPASLIP® anti-seize compound on all insert screws



TXP Inserts

Designation	l	s	r	d	d ¹	bs	a	Insert Material												
								Coated					Uncoated			Cermet				
222.79.400	.635	3/16	3/64	3/8	.173	.047	11°	●	●	●	●	●	●	●	●	●	●	●	●	●
222.79.500	.635	3/16	3/64	3/8	.173	.059	11°	●	●	●	●	●	●	●	●	●	●	●	●	●
222.79.510 ^{(1)*}	.635	.183	1/32	.386	.173	.067	11°	●	●	●	●	●	●	●	●	●	●	●	●	●

Note 1: Due to the higher side rake angles, 222.79.510 - 522, 222.79.550 - 222.79.552 & 222.79.610 inserts are wider and will cut oversize.