

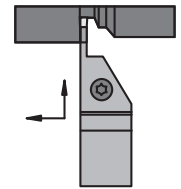
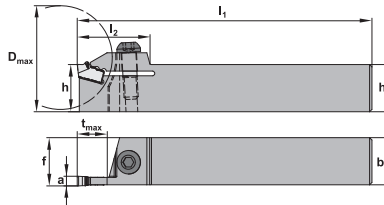
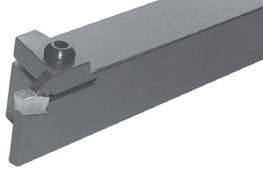
ProGroove Toolholding System

WIDIA

**ProGroove is our tool system for grooving and parting,
offering unrivalled versatility and performance.**

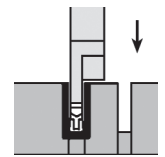
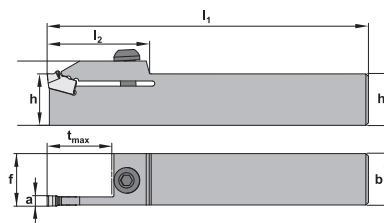
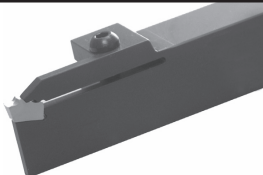
WAREHOUSE CLEARANCE SALE! • SALE PRICING ONLY WHILE QUANTITIES LAST!

225.00.1..



Designation RH/LH	a (mm)	a (inch)	h	b	f	l ¹	l ²	tmax	Dmax	QTY. RH/LH	SALE!	Insert 235.67...	Clamping Screw	Wrench
For Grooving, Parting, & Profiling														
225.00.131	3	.118	.75	.75	.763	5.00	1.02	.393	1.00	4	\$59.95	330/430/703/803	214.85.962	214.80.412
225.00.132/133	3	.118	1.00	1.00	1.013	6.00	1.02	.393	1.00	4 / 5	\$69.95			
225.00.140/141	4	.157	.75	.75	.767	5.00	1.22	.492	1.25	7 / 4	\$59.95	340/440/704/804	214.85.962	214.80.412
225.00.142/143	4	.157	1.00	1.00	1.017	6.00	1.22	.492	1.25	36 / 3	\$69.95			
225.00.152/153	5	.197	1.00	1.00	1.022	6.00	1.22	.492	---	31 / 4	\$69.95	350/450/805		
225.00.162 (RH)	6	.236	1.00	1.00	1.020	6.00	1.38	.630	---	42	\$69.95	360/460/806		
225.00.182 (RH)	8	.315	1.00	1.00	1.020	6.00	1.38	6.30	---	16	\$69.95	380/480	214.60.127	214.80.413

225.00.2..



Designation RH/LH	a (mm)	a (inch)	h	b	f	l ¹	l ²	tmax	Dmax	QTY. RH/LH	SALE!	Insert 235.67...	Clamping Screw	Wrench
For Grooving & Parting														
225.00.230/231	3	.118	.75	.75	.763	5.00	1.25	.787	---	5 / 5	\$69.95	330/430/703/803	214.85.962	214.80.412
225.00.232/233	3	.118	1.00	1.00	1.013	6.00	1.57	.984	---	2 / 6	\$79.95			
225.00.240/241	4	.157	.75	.75	.767	5.00	1.57	.984	---	9 / 6	\$69.95	340/440/704/804	214.85.962	214.80.412
225.00.242/243	4	.157	1.00	1.00	1.017	6.00	1.57	.984	---	11 / 4	\$79.95			
225.00.252/253	5	.197	1.00	1.00	1.022	6.00	2.08	1.260	---	7 / 4	\$79.95	350/450/805		
225.00.264 (RH)	6	.236	1.25	1.00	1.020	7.00	2.09	1.260	---	5	\$79.95	360/460/806		
225.00.284 (RH)	8	.315	1.25	1.00	1.020	1.77	2.60	1.575	---	10	\$79.95	380/480	214.60.127	214.80.413

TYSON TOOL®

TYSON TOOL COMPANY LIMITED
75 ORMONT DRIVE, TORONTO, ONTARIO, M9L-2S3
TEL: (416) 746-3688 ~~ FAX: (416) 746-5415
INTERNET: www.tysontool.com ~~ E-MAIL: sales@tysontool.com

Available From:

Specifications are subject to change without notice. No responsibility for errors and/or printing errors will be accepted.

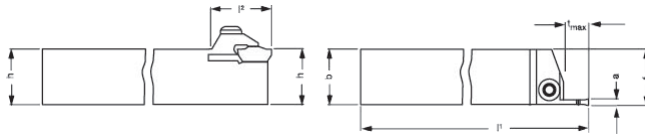
Last Updated: 05/10/2012

TwinGroove Toolholding System

WIDIA

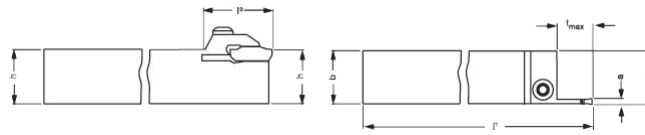
WAREHOUSE CLEARANCE SALE! • SALE PRICING ONLY WHILE QUANTITIES LAST!

225.00.3..



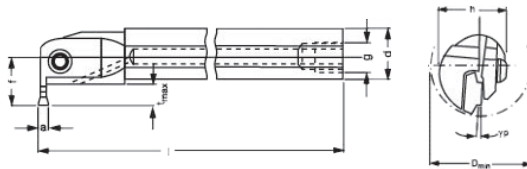
Designation	a (mm)	a (inch)	h	b	f	l ¹	l ²	Tmax	QTY.	SALE!	Insert	Clamping Screw	Wrench
<i>For Grooving, Parting & Profiling</i>													
225.00.352 (RH)	5	.197	1.00	1.00	1.00	6.00	1.38	.492	18	\$69.95	235.69.750/850	214.85.962	214.80.412
225.00.362 (RH)	6	.236	1.00	1.00	1.00	6.00	1.89	.630	13	\$69.95	235.69.760/860	214.60.127	214.80.413
225.00.382 (RH)	8	.315	1.00	1.00	1.00	6.00	1.89	.630	38	\$69.95	235.69.780/880	214.60.127	214.80.413

225.00.4..



Designation RH/LH	a (mm)	a (inch)	h	b	f	l ¹	l ²	Tmax	QTY. RH/LH	SALE!	Insert	Clamping Screw	Wrench
<i>For Grooving, & Parting</i>													
225.00.430/431	3	.118	.75	.75	.758	5.00	1.18	.551	1 / 1	\$69.95	235.69.730/830	214.85.962	214.80.412
225.00.440/441	4	.157	.75	.75	.760	5.00	1.38	.709	4 / 3	\$69.95	235.69.740/840	214.85.962	214.80.412
225.00.450/451	5	.197	.75	.75	.762	5.00	1.38	.709	5 / 2	\$69.95	235.69.750/850	214.85.962	214.80.412
225.00.452/453	5	.197	1.00	1.00	1.00	6.00	1.38	.709	6 / 2	\$69.95	235.69.750/850	214.85.962	214.80.412
225.00.484 (RH)	8	.315	1.25	1.25	1.00	7.00	1.89	1.102	19	\$79.95	235.69.780/880	214.60.127	214.80.413

225.00.5..



Designation	a (mm)	a (inch)	D min	d	h	f	l	yp	tmax	QTY.	SALE!	Insert	Clamping Screw	Wrench
<i>For Grooving, Parting & Profiling</i>														
225.00.542 (RH)	4	.157	1.42	1.00	.91	.88	7.87	-3°	.354	4	\$129.95	235.69.740/840	214.76.700	214.80.412
225.00.552 (RH)	5	.197	1.42	1.00	.91	.88	7.87	-3°	.354	20	\$139.95	235.69.750/850	214.76.700	214.80.412
225.00.564 (RH)	6	.236	1.81	1.25	1.18	1.14	9.84	-5°	.472	11	\$149.95	235.69.760/860	214.60.127	214.80.413
225.00.586 (RH)	8	.315	.217	1.50	1.50	1.33	11.81	-3.5°	.472	17	\$159.95	235.69.780/880	214.60.127	214.80.413