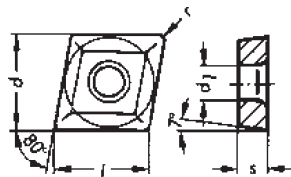
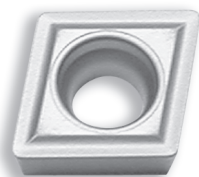
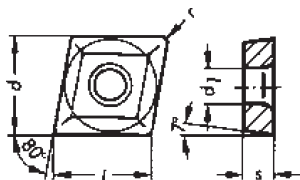
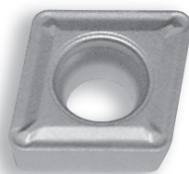


WIDIA INDEXABLE DRILLING INSERTS



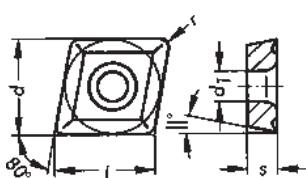
CCGT- ... -3

DESIGNATION	l	s	r	d	d ₁	COATED						UNCOATED			CERMET					
						TN7015	TN7025	TN200	TN250	TN35	TPC25	TPC35	TN5515	HK150	TTX	TTM	TTR	THM-F	THM	TTI-05
CCGT-21.51-3	.254	3/32	1/64	1/4	.114					●										
CCGT-21.52-3			1/32							●										
CCGT-2.521-3	.317	1/8	1/64	5/16	.134					●										
CCGT-2.522-3			1/32							●										



CCMT- ...

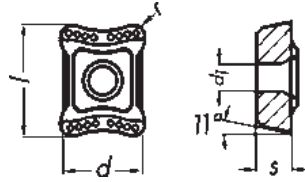
DESIGNATION	l	s	r	d	d ₁	COATED						UNCOATED			CERMET					
						TN7015	TN7025	TN200	TN250	TN35	TPC25	TPC35	TN5515	HK150	TTX	TTM	TTR	THM-F	THM	TTI-05
CCMT-21.51T	.254	3/32	1/64	1/4	.114					●										
CCMT-2.521	.317	1/8	1/64	5/16	.134	●	●			●										
CCMT-2.522			1/32			●	●			●										
CCMX-2.522			1/32							●										



CPGT- ... -3

DESIGNATION	l	s	r	d	d ₁	COATED						UNCOATED			CERMET					
						TN7015	TN7025	TN200	TN250	TN35	TPC25	TPC35	TN5515	HK150	TTX	TTM	TTR	THM-F	THM	TTI-05
CPGT-1.51.21-3	.189	5/64	1/64	3/16	.085					●										
CPGT-1.81.51-3	.222	3/32	1/64	7/32	.100					●										

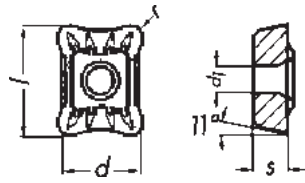
WIDIA INDEXABLE DRILLING INSERTS



DESIGNATION	l	s	r	d	d ₁
LPGX-06T103-34	.236	5/64	.012	.177	.083
LPGX-07T204-34	.295	7/64	1/64	7/32	.098
LPGX-100308-34	.394	1/8	1/32	19/64	.110

LPGX- ... -34

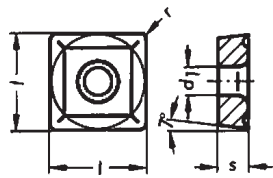
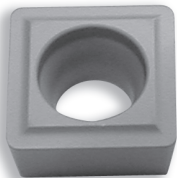
COATED										UNCOATED					CERMET	
TN7015	TN7025	TN200	TN250	TN35	TPC25	TPC35	TN5515	HK150	TTX	TTM	TTR	THM-F	THM	TTI-05	TTI-15	
●						●										
●						●										
●						●										



DESIGNATION	l	s	r	d	d ₁
LPGX-07T204-36	.295	7/64	1/64	7/32	.098
LPGX-100308-36	.394	1/8	1/32	19/64	.110

LPGX- ... -36

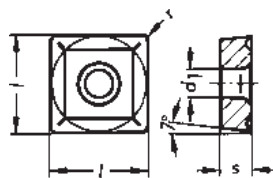
COATED										UNCOATED					CERMET	
TN7015	TN7025	TN200	TN250	TN35	TPC25	TPC35	TN5515	HK150	TTX	TTM	TTR	THM-F	THM	TTI-05	TTI-15	
●						●	●						●			
●						●	●						●			



DESIGNATION	l	s	r	d	d ₁
SCGT-32.51-3	.375	5/32	1/64	3/8	.173
SCGT-32.52-3			1/32		
SCGT-432-3	.500	3/16	1/32	1/2	.217

SCGT- ... -3

COATED										UNCOATED					CERMET	
TN7015	TN7025	TN200	TN250	TN35	TPC25	TPC35	TN5515	HK150	TTX	TTM	TTR	THM-F	THM	TTI-05	TTI-15	
				●												
				●							●					
				●												

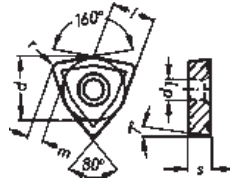
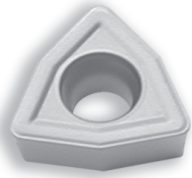


DESIGNATION	l	s	r	d	d ₁
SCMT-32.51	.375	5/32	1/64	3/8	.173
SCMT-32.52			1/32		
SCMT-432	.500	3/16	1/32	1/2	.217
SCMT-433			3/64		
SCMT-53.53	.625	7/32	3/64	5/8	.217

SCMT- ...

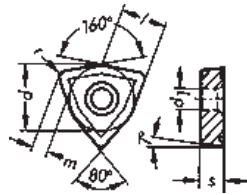
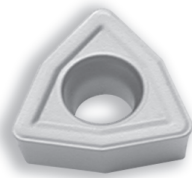
COATED										UNCOATED					CERMET	
TN7005	TN7010	TN7015	TN7025	TN7035	TN8025	TN5015	TN5020	TTX	TTM	TTR	THM-F	THM	TTI-05	TTI-15		
●	●	●	●	●		●						●				
●	●	●	●	●		●	●		●	●	●	●				
●	●	●	●	●		●		●	●	●	●	●				
				●						●		●		●		

WIDIA INDEXABLE DRILLING INSERTS



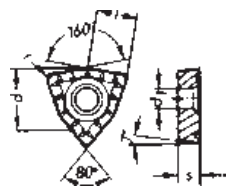
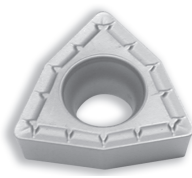
WCGT/WCMT

DESIGNATION	l	s	r	d	d ₁	COATED						UNCOATED			CERMET					
						TN7015	TN7025	TN200	TN250	TN35	TPC25	TPC35	TN5515	HK150	TTX	TTM	TTR	THM-F	THM	TTI-05
WCGT-030204	.150	3/32	1/64	7/32	.098					●		●						●		
WCGT-03T104	.128	5/64	1/64	3/16	.085					●		●						●		
WCGT-040204	.171	3/32	1/64	1/4	.110					●		●						●		
WCGT-050308	.214	1/8	1/32	5/16	.134					●		●						●		
WCMT-06T308	.257	5/32	1/32	3/8	.173					●		●						●		
WCMT-080408	.342	3/16	1/32	1/2	.216					●		●						●		



WCGT/WCMT-35

DESIGNATION	l	s	r	d	d ₁	COATED						UNCOATED			CERMET					
						TN7015	TN7025	TN200	TN250	TN35	TPC25	TPC35	TN5515	HK150	TTX	TTM	TTR	THM-F	THM	TTI-05
WCGT-030204-35	.150	3/32	1/64	7/32	.098					●		●						●		
WCGT-03T104-35	.128	5/64	1/64	3/16	.085					●		●						●		
WCGT-040204-35	.171	3/32	1/64	1/4	.110					●		●						●		
WCGT-050308-35	.214	1/8	1/32	5/16	.134					●		●						●		
WCMT-06T308-35	.257	5/32	1/32	3/8	.173					●		●						●		
WCMT-080408-35	.342	3/16	1/32	1/2	.216					●		●						●		



WCGT/WCMT-36

DESIGNATION	l	s	r	d	d ₁	COATED						UNCOATED			CERMET					
						TN7015	TN7025	TN200	TN250	TN35	TPC25	TPC35	TN5515	HK150	TTX	TTM	TTR	THM-F	THM	TTI-05
WCGT-050308-36	.214	1/8	1/32	5/16	.134	●		●				●								
WCMT-06T308-36	.257	5/32	1/32	3/8	.173			●				●								
WCMT-080408-36	.342	3/16	1/32	1/2	.216	●		●				●								