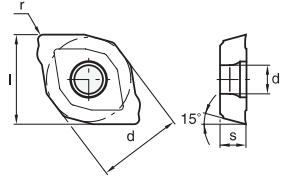
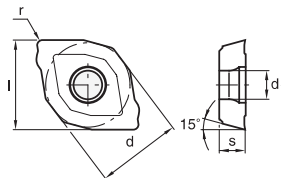
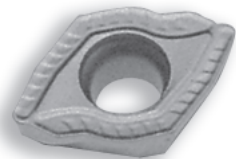


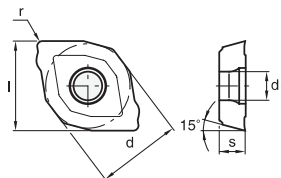
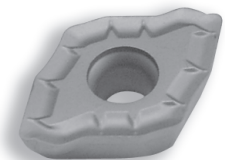
# WIDIA TOPCUT PLUS DRILLING INSERTS



DESIGNATION	l	s	r	d	d <sub>1</sub>	XOMT- ... -34													
						COATED						UNCOATED		CERMET					
						TN7015	TN7025	TN200	TN250	TN35	TPC25	TPC35	TN5515	HK150	TTX	TTM	TTR	THM-F	THM
XOMT-04T103-34	.188	5/64	.012	.178	.083	●						●	●					●	
XOMT-050204-34	.246	7/64	1/64	7/32	.098	●						●	●					●	
XOMT-070304-34	.328	1/8	1/64	.273	.110	●						●	●					●	
XOMT-09T306-34	.429	5/32	.024	25/64	.134	●						●	●					●	
XOMT-12T308-34	.549	5/32	1/32	.509	.173	●						●	●					●	
XOMT-160508-34	.683	7/32	1/32	.663	.216	●						●	●					●	



DESIGNATION	l	s	r	d	d <sub>1</sub>	XOMT- ... -35													
						COATED						UNCOATED		CERMET					
						TN7015	TN7025	TN200	TN250	TN35	TPC25	TPC35	TN5515	HK150	TTX	TTM	TTR	THM-F	THM
XOMT-04T103-35	.188	5/64	0.12	.178	.083	●						●	●					●	
XOMT-050204-35	.246	7/64	1/64	7/32	.098	●						●	●					●	
XOMT-070304-35	.328	1/8	1/64	.273	.110	●						●	●					●	
XOMT-09T306-35	.429	5/32	.024	25/64	.134	●						●	●					●	
XOMT-12T308-35	.549	5/32	1/32	.509	.173	●						●	●					●	
XOMT-160508-35	.683	7/32	1/32	.663	.216	●						●	●					●	



DESIGNATION	l	s	r	d	d <sub>1</sub>	XOMT- ... -36													
						COATED						UNCOATED		CERMET					
						TN7015	TN7025	TN200	TN250	TN35	TPC25	TPC35	TN5515	HK150	TTX	TTM	TTR	THM-F	THM
XOMT-050204-36	.246	7/64	1/64	7/32	.098	●						●							
XOMT-070304-36	.328	1/8	1/64	.273	.110	●						●							
XOMT-09T306-36	.429	5/32	.024	25/64	.134	●						●							
XOMT-12T308-36	.549	5/32	1/32	.509	.173	●						●							
XOMT-160508-36	.683	7/32	1/32	.663	.216	●						●							

For Insert Geometry descriptions, please see inside front cover.