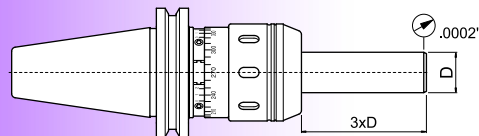


## Force

## Issue 16

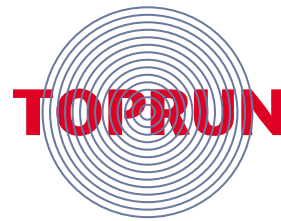
# Milling Chucks

- Ultra High Rigidity
- Improved tightening power over standard collet chucks
- Tough enough for roughing, accurate enough for finishing
- Balanceable for high speed machining
- Greater shank contact resulting in reduced vibration
- Axial accuracy:  
concentricity  $\leq .0002"$  at 3 x D

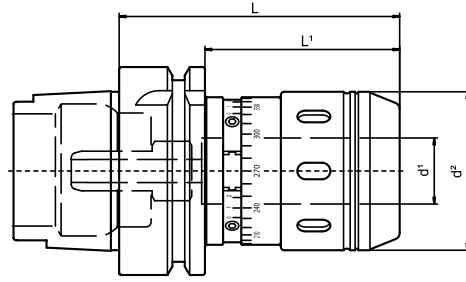


- No overtightening; built in torque
- Permits increased cutting rates and improved tool life
- Select Inch and Metric Milling Chucks available
- Inch to Inch, Metric to Metric & Metric to Inch straight collets available

\* Inch to Metric available upon request



# HSK-A

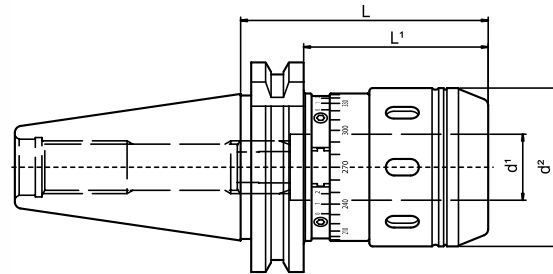


DESIGNATION	Shank Taper	d <sup>1</sup>	d <sup>2</sup>	L	L <sup>1</sup>	KG
HSK-A63MC-20MM-TR	A63	20mm	1.89	3.35	2.32	1.2
HSK-A63MC-32MM-TR	A63	32mm	2.60	4.33	---	1.9
HSK-A100MC-32MM-TR	A100	32mm	2.60	4.33	3.19	3.6

*Wrench: for d<sup>1</sup> = 20mm, use 10.150.04.0.0050 ~ for d<sup>1</sup> = 32mm, use 10.150.04.0.0075*

Wrenches and Collets sold separately

# DIN 69871-A

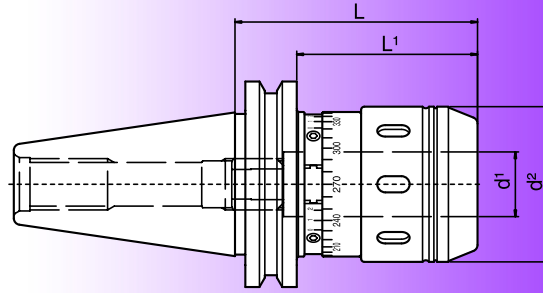


DESIGNATION	Shank Taper	d <sup>1</sup>	d <sup>2</sup>	L	L <sup>1</sup>	KG
DIN40MC-20MM-TR	40	20mm	1.89	2.95	2.17	1.3
DIN40MC-32MM-TR	40	32mm	2.60	4.13	3.35	1.8
DIN50MC-32MM-TR	50	32mm	2.60	3.94	3.15	3.0

*Wrench: for d<sup>1</sup> = 20mm, use 10.150.04.0.0050 ~ for d<sup>1</sup> = 32mm, use 10.150.04.0.0075*

Wrenches and Collets sold separately

# CAT V-Flange

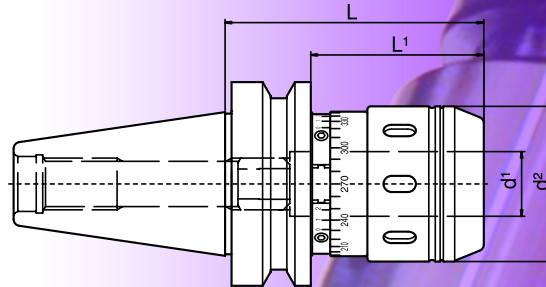


DESIGNATION	Shank Taper	d <sup>1</sup>	d <sup>2</sup>	L	L <sup>1</sup>	KG
CV40MC-0750-TR	40	.750	1.89	2.95	2.17	1.3
CV40MC-1250-TR	40	1.250	2.60	4.13	---	1.8
CV50MC-1250-TR	50	1.250	2.60	3.94	3.54	3.0

*Wrench: for d<sup>1</sup> = .750, use 10.150.04.0.0050 ~ for d<sup>1</sup> = 1.250, use 10.150.04.0.0075*

Wrenches and Collets sold separately

# MAS 403 BT



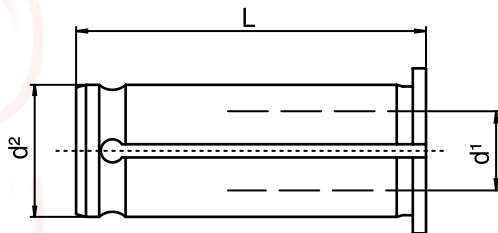
DESIGNATION	Shank Taper	d <sup>1</sup>	d <sup>2</sup>	L	L <sup>1</sup>	KG
BT40MC-0750-TR	40	.750	1.89	3.15	2.11	1.4
BT40MC-1250-TR	40	1.250	2.60	3.54	2.56	1.9
BT50MC-1250-TR	50	1.250	2.60	4.13	2.64	3.1
BT40MC-20MM-TR	40	20mm	1.89	3.15	2.11	1.4
BT40MC-32MM-TR	40	32mm	2.60	3.54	2.56	1.9
BT50MC-32MM-TR	50	32mm	2.60	4.13	2.64	3.1

*Wrench: for d<sup>1</sup> = .750 or 20mm, use 10.150.04.0.0050 ~ for d<sup>1</sup> = 1.250 or 32mm, use 10.150.04.0.0075*

Wrenches and Collets sold separately

All dimensions are in inch unless otherwise indicated

# Force Collets



DESIGNATION	I.D. d <sup>1</sup>	O.D. d <sup>2</sup>	L
MC075-0250	.250	.750	1.968
MC075-0312	.3125		
MC075-0375	.375		
MC075-0437	.4375		
MC075-0500	.500		
MC075-0625	.625		
MC125-0375	.375	1.250	2.480
MC125-0500	.500		
MC125-0625	.625		
MC125-0750	.750		
MC125-1000	1.000		
MC20-0250	.250	20mm	1.968
MC20-0375	.375		
MC20-0500	.500		
MC20-0625	.625		
MC32-0375	.375	32mm	2.480
MC32-0500	.500		
MC32-0625	.625		
MC32-0750	.750		
MC32-1000	1.000		
MC20-4MM	4mm	20mm	1.968
MC20-6MM	6mm		
MC20-8MM	8mm		
MC20-10MM	10mm		
MC20-12MM	12mm		
MC20-14MM	14mm		
MC20-16MM	16mm		
MC32-6MM	6mm	32mm	2.480
MC32-8MM	8mm		
MC32-10MM	10mm		
MC32-12MM	12mm		
MC32-14MM	14mm		
MC32-16MM	16mm		
MC32-18MM	18mm		
MC32-20MM	20mm		
MC32-25MM	25mm		

Inch O.D. to Metric I.D. available upon request

All dimensions are in inch unless otherwise indicated

## TYSON TOOL

TYSON TOOL COMPANY LIMITED  
 75 ORMONT DRIVE, TORONTO, ONTARIO, M9L-2S3  
 TEL: (416) 746-3888 ~~ FAX: (416) 746-5415  
 INTERNET: [www.tysonstool.com](http://www.tysonstool.com) ~~ E-MAIL: [sales@tysonstool.com](mailto:sales@tysonstool.com)

Available from:

Specifications are subject to change without notice. No responsibility for errors and/or printing errors will be accepted.