

TXP90AF

Axial Feed Milling Cutters

Axial feed or plunge milling:

- Allows milling operations to be performed in the direction of the spindle's axial movement.

Decreased tool deflection:

- Axial feed or plunge milling decreases cutter deflection, as all cutting forces are directed back into the spindle.

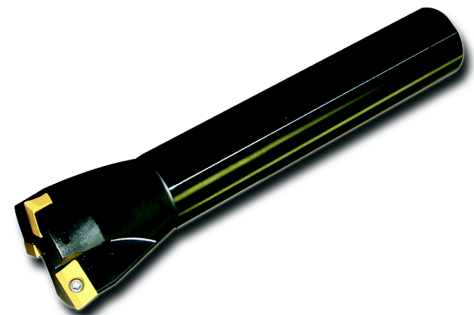
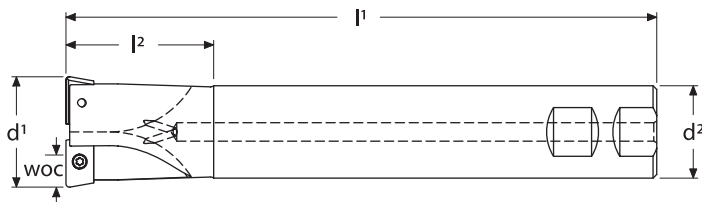
Up to 0.400" width of cut:

- Effectively remove, in one pass, more material than conventional milling techniques.
Please note: with axial feed cutters you cannot plunge into a solid workpiece.

Higher feed rates:

- By greatly reducing radial pressure on the tool, axial feed milling allows for higher feed rates

TXP90AF End Mills

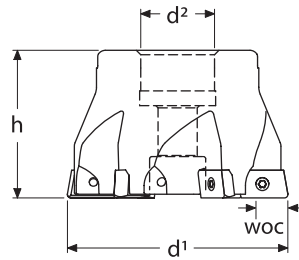


DESIGNATION	DIMENSIONS						INSERT	SPARE PARTS	
	d ¹	d ²	l ¹	l ²	W.O.C.	Flutes		Insert Screw	Torx® Wrench
TXP90AF-1500C	1.500	1.250	8.00	2.00	0.40	2	222.79.501	214.80.388	214.80.012 (F/T)
TXP90AF-2000C	2.000	1.250	8.00	2.00	0.40	3			214.80.824 (S/D)

Remember to use COPASLIP® Anti-Seize compound on all TORX® Screws

TXP90AF Axial Feed Milling Cutters

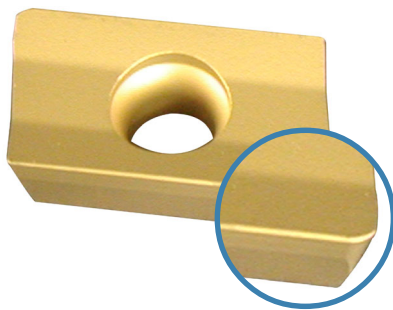
TXP90AF Shell Mills



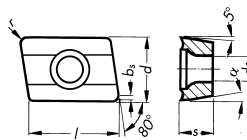
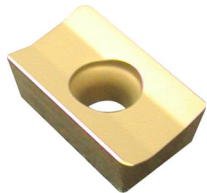
DESIGNATION	DIMENSIONS					INSERT	SPARE PARTS	
	d ¹	d ²	h	W.O.C.	Flutes		Insert Screw	Torx® Wrench
TXP90AF-2500	2.50	.750	1.50	0.40	5	222.79.501	214.80.388	214.80.012 (F/T) 214.80.824 (S/D)
TXP90AF-3000	3.00	1.000	2.00	0.40	6			
TXP90AF-4000	4.00	1.500	2.50	0.40	7			

Remember to use COPASLIP® Anti-Seize compound on all TORX® Screws

222.79.501



- High shear radial angles allow for good performance in all applications and materials.
- Precision ground.



222.79.501

DESIGNATION	l	s	r	d	d ₁	b _s	COATED				UNCOATED				CERMET		
							TN25M	TN7525	TN7535	TN450	TN5505	TN5515	TTM	TTR	THM	THR	TTI-25
222.79.501	.635	.187	.031	.375	.173	.071	●	●	●								



TYSON TOOL COMPANY LIMITED
 75 ORMONT DRIVE, TORONTO, ONTARIO, M9L-2S3
 TEL: (416) 746-3688 ~~ FAX: (416) 746-5415
 INTERNET: www.tysonstool.com ~~ E-MAIL: sales@tysonstool.com

Available from:

Specifications are subject to change without notice. No responsibility for errors and/or printing errors will be accepted.

T/21-TXP90AF-0211