

# INDEXABLE INSERTS FOR MILLING INDEX

PAGE(S)

## CARBIDE MILLING INSERTS

222.67.102 TO 222.67.132 .....	52
222.79.100 TO 222.79.110 .....	52
222.79.112 .....	52
222.79.400 .....	52
222.79.500 TO 222.79.600 .....	53
222.79.501 .....	53
222.79.510 TO 222.79.610 .....	53
222.79.550 TO 222.79.554 .....	54
222.79.564 .....	54
235.06.599 TO 235.06.602 .....	54
238.57.004 TO 238.57.414 .....	55
AONT-10T308-MH .....	55
AONT-10T308-ML .....	55
AONT-10T308-MM .....	56
CDNT .....	56
CPNT .....	56
RCMT-1606MO-43M .....	56
RCMT-1606MOT-X .....	57
RDH-16M .....	57
RDHT .....	57
RDHW -MH .....	57
RDHW-12T3MOT-MH AND RDHW-1604MOT-MH .....	58
RDHW -ML .....	58
RDMT .....	58
RDMW .....	58
RPMA .....	59
SCKM .....	59
SDMT -MH .....	59
SDMT -ML .....	59
SDNT .....	60
SEHT AF .....	60
SEHT AFFN-ALC .....	60
SEHW AF .....	60
SEK .....	61
SEKR .....	61
SEKT .....	61
SEKW .....	61
SNK .....	62
SNKT -20 .....	62
SNKT -21 .....	62
SNKT -31 .....	62
SNMT -31 .....	63
SPK .....	63
SPKR .....	63
SPMW .....	64
SPNT/SPNX .....	64
TPA .....	64
TPG .....	65
TPJ .....	65
TPK .....	65
TPKR .....	65
TPKR -MS .....	66
TPU .....	66
XNKT -11 .....	66
XNKT -12 .....	66

## PCD/CBN TIPPED

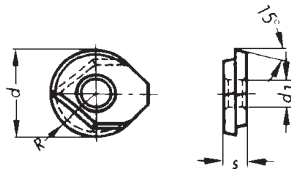
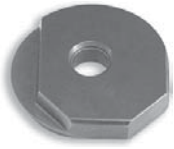
FPCW .....	67
XPHW ... F20 .....	67
XPHW ... F50 .....	67





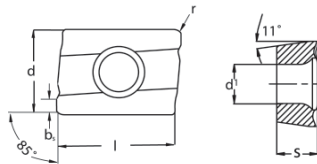


# INDEXABLE INSERTS FOR MILLING



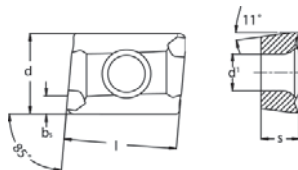
## 238.57. ...

DESIGNATION	l	s	r	d	d <sub>1</sub>	m	COATED								UNCOATED				CERMET
							TN2505	TN2510	TN25M	TN7525	TN7535	TN450	TN5505	TN5515	TTM	TTR	THM	THR	TTI-25
238.57.004	--	3/32	.197	10mm	.138	--	●	●							●		●		●
238.57.006	--	1/8	.236	12mm	.138	--	●	●							●		●		●
238.57.008	--	3/16	.315	16mm	.181	--	●	●							●		●		●
238.57.010	--	3/16	.394	20mm	.181	--	●	●							●		●		●
238.57.012	--	3/16	.492	25mm	.220	--	●	●							●		●		●
238.57.014	--	3/16	.630	32mm	.260	--	●	●							●		●		●
238.57.404	--	3/32	3/16	3/8	.138	--	●								●		●		●
238.57.406	--	1/8	1/4	1/2	.138	--	●								●		●		●
238.57.408	--	3/16	5/16	5/8	.181	--	●								●		●		●
238.57.410	--	3/16	3/8	3/4	.181	--	●								●		●		●
238.57.412	--	3/16	1/2	1	.220	--	●								●		●		●
238.57.414	--	3/16	5/8	1-1/4	.260	--									●		●		●



## AONT- ... -MH

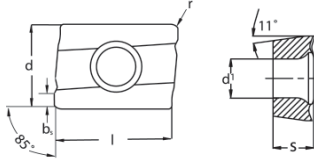
DESIGNATION	l	s	r	d	d <sub>1</sub>	b <sub>s</sub>	COATED								UNCOATED				CERMET	
							TN2505	TN2510	TN25M	TN7525	TN7535	TN450	TN5505	TN5515	TTM	TTR	THM	THR	TTI-25	
AONT-10T308-MH	.407	.156	.031	.297	.134	.039														●



## AONT- ... -ML

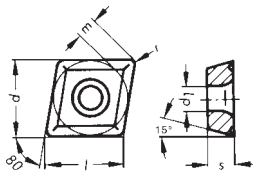
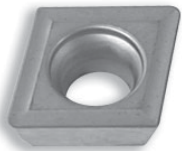
DESIGNATION	l	s	r	d	d <sub>1</sub>	b <sub>s</sub>	COATED								UNCOATED				CERMET	
							TN2505	TN2510	TN25M	TN7525	TN7535	TN450	TN5505	TN5515	TTM	TTR	THM	THR	TTI-25	
AONT-10T08-ML	.407	.156	.031	.297	.134	.039														●

# INDEXABLE INSERTS FOR MILLING



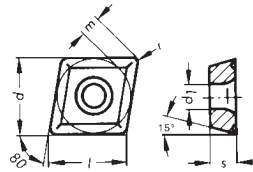
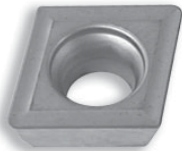
## AONT- ... -MM

DESIGNATION	l	s	r	d	d <sub>1</sub>	b <sub>5</sub>	COATED					UNCOATED				CERMET		
							TN2505	TN2510	TN25M	TN7525	TN7535	TN450	TN5505	TN5515	TTM	TTR	THM	THR
AONT-10T308-MM	.407	.156	.031	.297	.134	.039				●	●	●		●				●



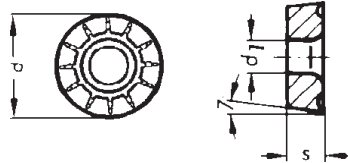
## CDNT- ...

DESIGNATION	l	s	r	d	d <sub>1</sub>	m	COATED					UNCOATED				CERMET		
							TN2505	TN2510	TN25M	TN7525	TN7535	TN450	TN5505	TN5515	TTM	TTR	THM	THR
CDNT-2.551T	.250	3/32	1/64	1/4	.110	.078								●				
CDNT-32.5T	.375	5/32	1/32	3/8	.173	.087							●					



## CPNT- ...

DESIGNATION	l	s	r	d	d <sub>1</sub>	m	COATED					UNCOATED				CERMET		
							TN2505	TN2510	TN25M	TN7525	TN7535	TN450	TN5505	TN5515	TTM	TTR	THM	THR
CPNT-21.51T	.250	3/32	1/64	1/4	.110	.061								●	●	●		
CPNT-2.522T	.313	1/8	1/32	5/16	.134	.069								●	●	●		
CPNT-32.52T	.375	5/32	1/32	3/8	.173	.087								●	●	●		
CPNT-432T	.500	3/16	1/32	1/2	.217	.121								●	●	●		

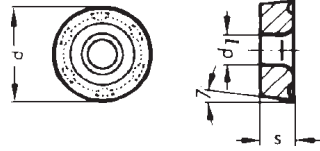


## RCMT- ... -43M

DESIGNATION	l	s	r	d	d <sub>1</sub>	m	COATED					UNCOATED				CERMET		
							TN2505	TN2510	TN25M	TN7525	TN7535	TN450	TN5505	TN5515	TTM	TTR	THM	THR
RCMT-1606MO-43M*	--	1/4	--	.630	.213	--	●			●	●	●						●

\* Inserts have integrated anti-rotation lock

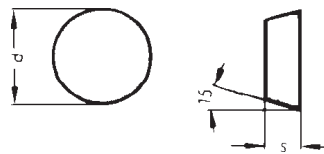
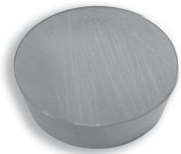
# INDEXABLE INSERTS FOR MILLING



## RCMT- ... -X

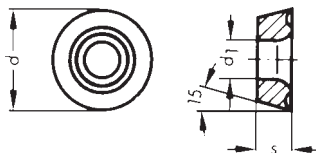
DESIGNATION	l	s	r	d	d <sub>1</sub>	m	COATED				UNCOATED		CERMET					
							TN2505	TN2510	TN25M	TN7525	TN7535	TN450	TN5505	TN5515	TTM	TTR	THM	THR
RCMT-1606MOT-X*	--	1/4	--	.630	.217	--	●		●	●								

\* Inserts have integrated anti-rotation lock



## RDH- ...

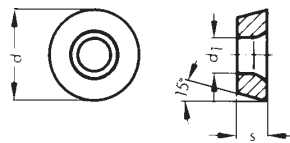
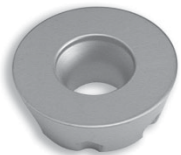
DESIGNATION	l	s	r	d	d <sub>1</sub>	m	COATED				UNCOATED		CERMET					
							TN2505	TN2510	TN25M	TN7525	TN7535	TN450	TN5505	TN5515	TTM	TTR	THM	THR
RDH-16M	--	3/16	--	.630	--	--					●							



## RDHT- ...

DESIGNATION	l	s	r	d	d <sub>1</sub>	m	COATED				UNCOATED		CERMET					
							TN2505	TN2510	TN25M	TN7525	TN7535	TN450	TN5505	TN5515	TTM	TTR	THM	THR
RDHT-0802MOT	--	3/32	--	.315	.134	--			●	●								●
RDHT-1003MOT	--	1/8	--	.394	.173	--			●	●								●
RDHT-1204MOT-X *	--	3/16	--	.472	.173	--			●	●								●
RDHT-1605MOT-X *	--	7/32	--	.630	.217	--			●	●								●

\* Inserts have integrated anti-rotation lock

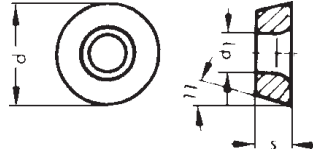


## RDHW- ... -MH

DESIGNATION	l	s	r	d	d <sub>1</sub>	m	COATED				UNCOATED		CERMET					
							TN2505	TN2510	TN25M	TN7525	TN7535	TN450	TN5505	TN5515	TTM	TTR	THM	THR
RDHW-0802MO-MH	---	3/32	---	.315	.134	---	●											
RDHW-1003MO-MH	---	1/8	---	.394	.173	---	●											
RDHW-1204MO-MH*	---	3/16	---	.472	.173	---	●											
RDHW-1605MOT-MH*	---	7/32	---	.630	.217	---	●											

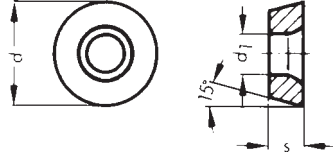
\* Inserts have integrated anti-rotation lock

# INDEXABLE INSERTS FOR MILLING



## RDHW- ... - MH

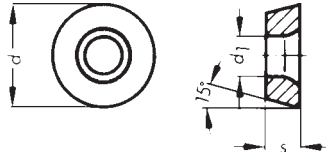
DESIGNATION	l	s	r	d	d <sub>1</sub>	m	COATED					UNCOATED				CERMET		
							TN2505	TN2510	TN25M	TN7525	TN7535	TN450	TN5505	TN5515	TTM	TTR	THM	THR
RDHW-12T3MOT-MH	---	5/32	---	.472	.217	---	●						●	●				
RDHW-1604MOT-MH	---	3/16	---	.630	.217	---	●						●	●				



## RDHW- ... -ML

DESIGNATION	l	s	r	d	d <sub>1</sub>	m	COATED					UNCOATED				CERMET		
							TN2505	TN2510	TN25M	TN7525	TN7535	TN450	TN5505	TN5515	TTM	TTR	THM	THR
RDHW-0802MO-ML	---	3/32	---	.315	.134	---	●											
RDHW-1003MO-ML	---	1/8	---	.394	.173	---	●											
RDHW-1204MOT-ML*	---	3/16	---	.472	.173	---	●											
RDHW-1605MOT-ML*	---	7/32	---	.630	.217	---	●											

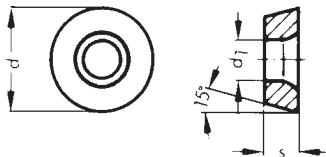
\* Inserts have integrated anti-rotation lock



## RDMT- ...

DESIGNATION	l	s	r	d	d <sub>1</sub>	m	COATED					UNCOATED				CERMET		
							TN2505	TN2510	TN25M	TN7525	TN7535	TN450	TN5505	TN5515	TTM	TTR	THM	THR
RDMT-0802MOT	--	3/32	--	.315	.134	--				●	●	●		●	●			
RDMT-1003MOT	--	1/8	--	.394	.173	--				●	●	●		●	●			
RDMT-1204MOT-X*	--	3/16	--	.472	.173	--		●	●	●	●	●		●	●			
RDMT-1605MOT-X*	--	7/32	--	.630	.217	--		●	●	●	●	●		●	●			

\* Inserts have integrated anti-rotation lock

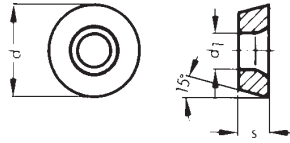


## RDMW- ...

DESIGNATION	l	s	r	d	d <sub>1</sub>	m	COATED					UNCOATED				CERMET		
							TN2505	TN2510	TN25M	TN7525	TN7535	TN450	TN5505	TN5515	TTM	TTR	THM	THR
RDMW-0802MOT	--	3/32	--	.315	.134	--	●							●	●			●
RDMW-1003MOT	--	1/8	--	.394	.173	--	●		●	●	●			●	●			●
RDMW-1204MOT-X*	--	3/16	--	.472	.173	--	●		●	●	●			●	●			●
RDMW-1605MOT-X*	--	7/32	--	.630	.217	--	●		●	●	●			●	●			●

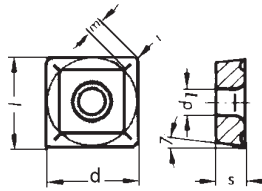
\* Inserts have integrated anti-rotation lock

# INDEXABLE INSERTS FOR MILLING



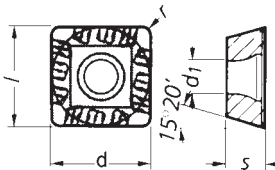
## RPMA- ...

DESIGNATION	l	s	r	d	d <sub>1</sub>	m	COATED					UNCOATED		CERMET					
							TN2505	TN2510	TN25M	TN7525	TN7535	TN450	TN5505	TN5515	TTM	TTR	THM	THR	TTI-25
RPMA-08M	--	3/32	--	.315	.134	--													
RPMA-10M	--	1/8	--	.394	.173	--													
RPMA-12M	--	3/16	--	.472	.173	--			●										



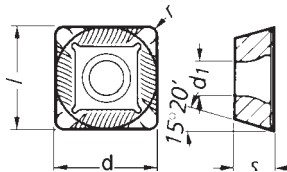
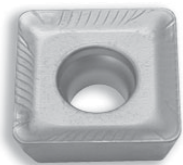
## SCKM- ...

DESIGNATION	l	s	r	d	d <sub>1</sub>	m	COATED					UNCOATED		CERMET					
							TN2505	TN2510	TN25M	TN35M	TPC35	TN450	TN5505	TN5515	TTM	TTR	THM	THR	TTI-25
SCKM-1205 ACTR	.500	.197	--	1/2	.215	--													



## SDMT- ... -MH

DESIGNATION	l	s	r	d	d <sub>1</sub>	m	COATED					UNCOATED		CERMET					
							TN2505	TN2510	TN25M	TN7525	TN7535	TN450	TN5505	TN5515	TTM	TTR	THM	THR	TTI-25
SDMT-1204PDR-MH	.500	3/16	3/64	1/2	.173	--		●	●	●	●								●
SDMT-1506PDR-MH	.625	1/4	3/64	5/8	.217	--		●	●	●	●								●

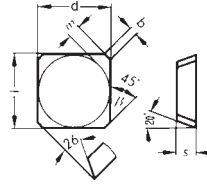


## SDMT- ... -ML

DESIGNATION	l	s	r	d	d <sub>1</sub>	m	COATED					UNCOATED		CERMET					
							TN2505	TN2510	TN25M	TN7525	TN7535	TN450	TN5505	TN5515	TTM	TTR	THM	THR	TTI-25
SDMT-1204PDR-ML	.500	3/16	3/64	1/2	.173	--		●	●	●	●								●
SDMT-1506PDR-ML	.625	1/4	3/64	5/8	.217	--		●	●	●	●								●

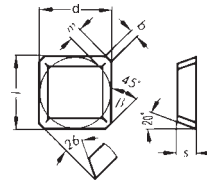


# INDEXABLE INSERTS FOR MILLING



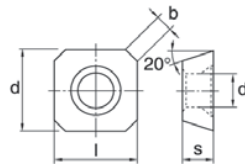
## SEK- ...

DESIGNATION	l	s	r	d	b <sub>s</sub>	m	COATED				UNCOATED		CERMET		
							TN2505	TN2510	TN25M	TN7525	TN7535	TN450	TN5505	TN5515	TTM
SEK-42 AFN-1	.500	1/8	--	1/2	.077	.065			●	●	●	●			●
SEK-43 AFN-1	.500	3/16	--	1/2	.077	.065			●	●	●	●			●
SEK-53 AFN-1	.625	3/16	--	5/8	.075	.089			●	●	●	●			●



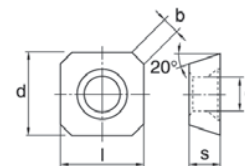
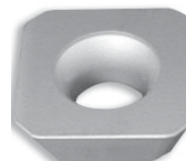
## SEKR- ...

DESIGNATION	l	s	r	d	b <sub>s</sub>	m	COATED				UNCOATED		CERMET		
							TN2505	TN2510	TN25M	TN7525	TN7535	TN450	TN5505	TN5515	TTM
SEKR-42 AFN-1	.500	1/8	--	1/2	.065	.065			●	●	●	●			
SEKR-43 AFN-1	.500	3/16	--	1/2	.065	.065			●	●	●	●			
SEKR-53 AFN-1	.625	3/16	--	5/8	.075	.089			●	●	●	●			



## SEKT- ... AFSN

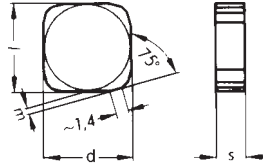
DESIGNATION	l	s	r	d	d <sub>1</sub>	b <sub>s</sub>	COATED				UNCOATED		CERMET			
							TP30MC	TP40MP			TK10MP	TP25M	TK10M			
SEKT-43 AFSN	.500	3/16	---	1/2	.217	.062	●									



## SEKW- ... AFSN

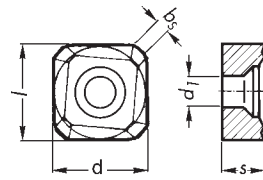
DESIGNATION	l	s	r	d	d <sub>1</sub>	b <sub>s</sub>	COATED				UNCOATED		CERMET			
							TP30MC	TP40MP			TK10MP	TP25M	TK10M			
SEKW-43 AFSN	.500	3/16	---	1/2	.217	.062	●									

# INDEXABLE INSERTS FOR MILLING



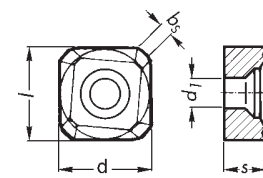
DESIGNATION	l	s	r	d	d <sub>1</sub>	m
SNK-43 EN	.500	3/16	--	1/2	--	.031
SNK-53 EN	.625	3/16	--	5/8	--	.045

SNK- ...												
COATED						UNCOATED		CERMET				
TN2505	TN2510	TN25M	TN7525	TN7535	TN450	TN5505	TN5515	TTM	TTR	THM	THR	TTI-25
								●				
								●				



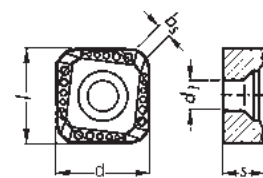
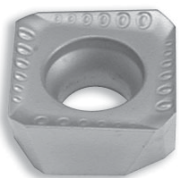
DESIGNATION	l	s	r	d	d <sub>1</sub>	b <sub>s</sub>
SNKT-1205 AZER-20	.500	7/32	---	1/2	.217	.061

SNKT- ... -20												
COATED						UNCOATED		CERMET				
TN2505	TN2510	TN25M	TN7525	TN7535	TN450	TN5505	TN5515	TTM	TTR	THM	THR	TTI-25
	●		●	●	●	●	●					●



DESIGNATION	l	s	r	d	d <sub>1</sub>	b <sub>s</sub>
SNKT-1205 AZR-21	.500	7/32	--	1/2	.217	.061
SNKT-1505 AZR-21	.625	7/32	--	5/8	.217	.079

SNKT- ... -21												
COATED						UNCOATED		CERMET				
TN2505	TN2510	TN25M	TN7525	TN7535	TN450	TN5505	TN5515	TTM	TTR	THM	THR	TTI-25
	●		●				●			●		●
	●						●					●



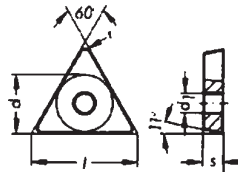
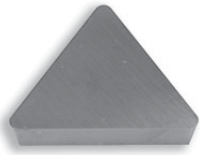
DESIGNATION	l	s	r	d	d <sub>1</sub>	b <sub>s</sub>
SNKT-1205 AZR-31	.500	7/32	--	1/2	.217	.061
SNKT-1505 AZR-31	.625	7/32	--	5/8	.217	.079

SNKT- ... -31												
COATED						UNCOATED		CERMET				
TN2505	TN2510	TN25M	TN7525	TN7535	TN450	TN5505	TN5515	TTM	TTR	THM	THR	TTI-25
	●		●	●	●		●	●				
	●		●	●	●		●					



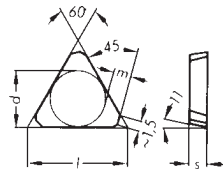
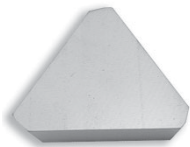


# INDEXABLE INSERTS FOR MILLING



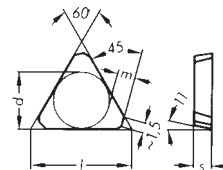
## TPG- ...

DESIGNATION	l	s	r	d	d <sub>1</sub>	m	COATED				UNCOATED		CERMET					
							TN2505	TN2510	TN25M	TN7525	TN7535	TN450	TN5505	TN5515	TTM	TTR	THM	THR
TPG-21.51	.433	3/32	1/64	1/4	--	.359												
TPG-21.52			1/32			.344												
TPG-322	.650	1/8	1/32	3/8	--	.531												
TPG-323			3/64			.515												



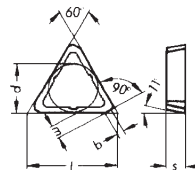
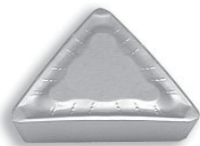
## TPJ- ..

DESIGNATION	l	s	r	d	d <sub>1</sub>	m	COATED				UNCOATED		CERMET					
							TN2505	TN2510	TN25M	TN7525	TN7535	TN450	TN5505	TN5515	TTM	TTR	THM	THR
TPJ-32 AEL	.650	1/8	--	3/8	--	.106			●									
TPJ-42 AEL	.866	1/8	--	1/2	--	.165												
TPJ-32 AER	.650	1/8	--	3/8	--	.106			●	●	●	●						●
TPJ-42 AER	.866	1/8	--	1/2	--	.165			●	●	●	●						
TPJ-47 AER	.866	5/32	--	1/2	--	.151			●									



## TPK- ..

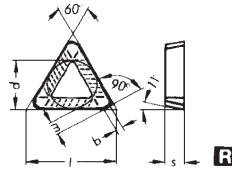
DESIGNATION	l	s	r	d	d <sub>1</sub>	m	COATED				UNCOATED		CERMET					
							TN2505	TN2510	TN25M	TN7525	TN7535	TN450	TN5505	TN5515	TTM	TTR	THM	THR
TPK-32 PDL	.650	1/8	--	3/8	--	.097				●			●					
TPK-43 PDL	.866	3/16	--	1/2	--	.140				●								
TPK-32 PDR	.650	1/8	--	3/8	--	.097			●	●	●	●						●
TPK-43 PDR	.866	3/16	--	1/2	--	.140			●	●	●	●						●



## TPKR- ..

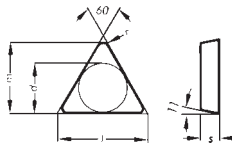
DESIGNATION	l	s	r	d	d <sub>1</sub>	m	COATED				UNCOATED		CERMET					
							TN2505	TN2510	TN25M	TN7525	TN7535	TN450	TN5505	TN5515	TTM	TTR	THM	THR
TPKR-43 PDR	.866	3/16	--	1/2	--	.140												●

# INDEXABLE INSERTS FOR MILLING



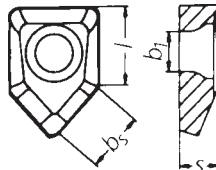
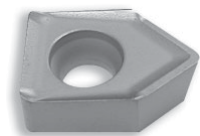
DESIGNATION	l	s	r	d	d <sub>1</sub>	m
TPKR-32 PDR-MS	.650	1/8	--	3/8	--	.097
TPKR-43 PDR-MS	.866	3/16	--	1/2	--	.140

TPKR- ... -MS												
COATED						UNCOATED			CERMET			
TN2505	TN2510	TN25M	TN7525	TN7535	TN450	TN5505	TN5515	TTM	TTR	THM	THR	TTI-25
		●	●	●	●		●	●				
		●	●	●	●		●	●				



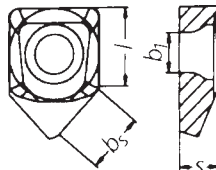
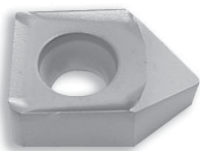
DESIGNATION	l	s	r	d	d <sub>1</sub>	m
TPU-21.51	.433	3/32	1/64	1/4	--	.359
TPU 21.52			1/32			.344
TPU-321	.650	1/8	1/64	3/8	--	.530
TPU-322			1/32			.531
TPU-323			3/64			.515
TPU-432	.866	3/16	1/32	1/2	--	.718
TPU-433			3/64			.703
TPU-434			1/16			.688

TPU- ...												
COATED						UNCOATED			CERMET			
TN2505	TN2510	TN25M	TN7525	TN7535	TN450	TN5505	TN5515	TTM	TTR	THM	TTS	TTI-25
								●				
								●				
								●	●	●		
								●	●	●	●	
								●		●		
								●	●	●		
								●		●		



DESIGNATION	l	s	r	d	d <sub>1</sub>	b <sub>s</sub>
XNKT-1205 AZER-11	.500	7/32	--	1/2	.217	.315

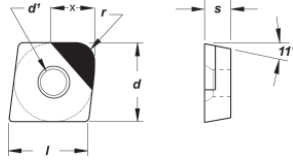
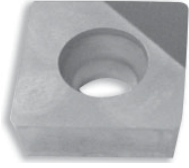
XNKT- ... -11												
COATED						UNCOATED			CERMET			
TN2505	TN2510	TN25M	TN7525	TN7535	TN450	TN5505	TN5515	TTM	TTR	THM	THR	TTI-25
●	●		●			●	●			●		●



DESIGNATION	l	s	r	b <sub>s</sub>	d <sub>1</sub>	b <sub>s</sub>
XNKT-1205 AZTR-12	.500	7/32	--	1/2	.217	.315

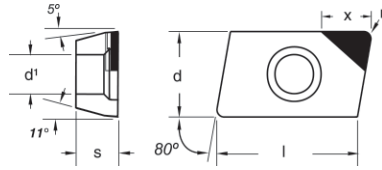
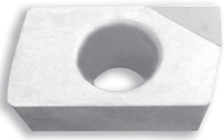
XNKT- ... -12												
COATED						UNCOATED			CERMET			
TN2505	TN2510	TN25M	TN7525	TN7535	TN450	TN5505	TN5515	TTM	TTR	THM	THR	TTI-25
	●		●			●	●			●		●

# PCD/CBN INDEXABLE INSERTS FOR MILLING



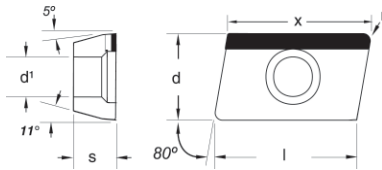
## FPCW- ...

DESIGNATION	l	s	r	d	d <sub>1</sub>	x	PCD		CBN	
							E20	E30	CG60	CH25
FPCW-432R	.500	.188	1/32	1/2	.195	.237	●	●		
FPCW-436R			3/32				●	●		



## XPHW- ... F20

DESIGNATION	l	s	r	d	d <sub>1</sub>	x	PCD		CBN	
							E20	E30	CG60	CH25
XPHW-160408F20 (MAX. Depth of Cut.200")	.630	3/16	1/32	3/8	.173	.250	●	●		
XPHW-160408F20-R0815 (MAX. Depth of Cut.200")	.815	3/16	1/32	3/8	.173	.250			●	
XPHW-160408F20-R0525 (MAX. Depth of Cut.075")	.075		1/32			.250				●



## XPHW- ... F50

DESIGNATION	l	s	r	d	d <sub>1</sub>	x	PCD		CBN	
							E20	E30	CG60	CH25
XPHW-160408F50 (MAX. Depth of Cut.500")	.630	3/16	1/32	3/8	.173	.600	●	●		