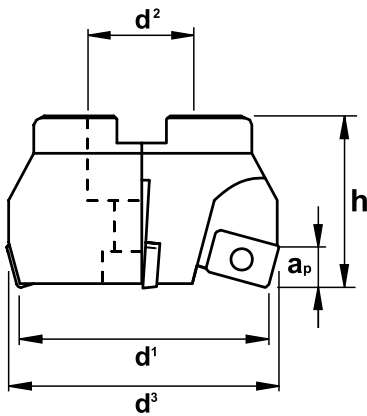


TXP75 *75° SHELL MILL CUTTER

- Specifically designed to use the popular 222.79.400 insert and utilizes the opposing unused corners
- 100° corners offer strong cutting edges & maximum depth of cut
- High machining rates in semi-finishing and rough-milling operations



d^1	DESIGNATION	d^2	d^3	Depth of Cut a_p	h	Flutes
INSERT:				222.79.400		
2.50	TXP75-2500	1.000	2.60	.275	2.00	4
4.00	TXP75-4000	1.250	4.10	.275	2.00	6
Spare Parts: Torx® Insert Screw #214.80.388				Torx® Wrench #214.80.824 (S/D) or #214.80.012 (F/T)		

* not designed to use 222.79.500/510 series inserts

WIDIA INSERTS FOR TXP75 MILLING CUTTERS

WIDIA INSERT	DESIGNATION	DIMENSIONS					COATED						UNCOATED				CERMET			
		l	s	r	d	d_1	TN7525	TN7535	TN25M	TPC25	TPC35	TN450	TN5515	HK15M	TTM	TTR	THM	THR	TTI-25	
	222.79.400	.635	3/16	3/64	3/8	.173	●	●	●	●	●	●	●	●	●					

TYSON TOOL™

TYSON TOOL COMPANY LIMITED
 75 ORMONT DRIVE, TORONTO, ONTARIO, M9L-2S3
 TEL: (416) 746-3688 ~~ FAX: (416) 746-5415
 INTERNET: www.tysonstool.com ~~ E-MAIL: sales@tysonstool.com



Available from:

Specifications are subject to change without notice. No responsibility for errors and/or printing errors will be accepted.