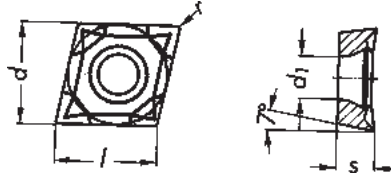
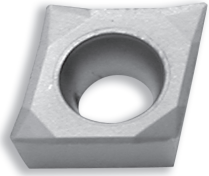
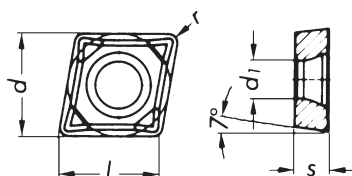
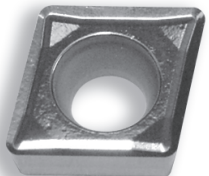


# WIDIA INDEXABLE INSERTS FOR ALUMINUM



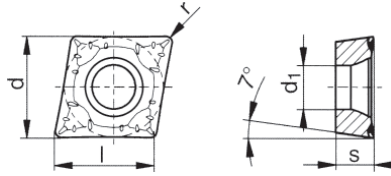
## CCGT- ... -AL1

DESIGNATION	l	s	r	d	d <sub>1</sub>	COATED				UNCOATED		CERMET
						HCK10				W1090	W1095	
CCGT-21.50.5-AL1	.254	3/32	.008	1/4	.110	●				●		
CCGT-21.51-AL1			1/64			●				●		
CCGT-32.50.5-AL1	.380	5/32	.008	3/8	.173	●				●		
CCGT-32.51-AL1			1/64			●				●		
CCGT-32.52-AL1			1/32			●				●		
CCGT-430.5-AL1	.508	3/16	.008	1/2	.217	●				●		
CCGT-431-AL1			1/64			●				●		
CCGT-432-AL1			1/32			●				●		



## CCGT- ... -AL2

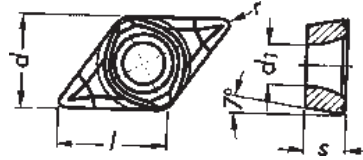
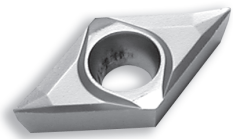
DESIGNATION	l	s	r	d	d <sub>1</sub>	COATED				UNCOATED		CERMET
						HCK10				W1090	W1095	
CCGT-21.50.5-AL2	.254	3/32	.008	1/4	.110					●		
CCGT-21.51-AL2			1/64							●		
CCGT-32.51-AL2	.380	5/32	1/64	3/8	.173					●		
CCGT-32.52-AL2			1/32							●		



## CCGT- ... -AL3

DESIGNATION	l	s	r	d	d <sub>1</sub>	COATED				UNCOATED		CERMET
						HCK10				W1090	W1095	
CCGT-21.50.5-AL3	.254	3/32	.008	1/4	.110	●				●		
CCGT-21.51-AL3			1/64			●				●		
CCGT-32.50.5-AL3	.380	5/32	.008	3/8	.173	●				●		
CCGT-32.51-AL3			1/64			●				●		
CCGT-32.52-AL3			1/32			●				●		
CCGT-430.5-AL3	.508	3/16	.008	1/2	.217	●				●		
CCGT-431-AL3			1/64			●				●		
CCGT-432-AL3			1/32			●				●		

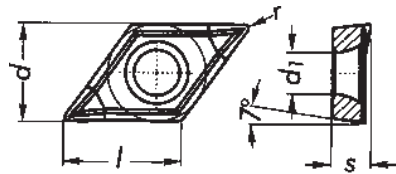
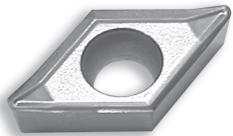
# WIDIA INDEXABLE INSERTS FOR ALUMINUM



DESIGNATION	l	s	r	d	d <sub>1</sub>
DCGT-21.50.5-AL1	.305	3/32	.008	1/4	.110
DCGT-21.51-AL1			1/64		
DCGT-32.50.5-AL1	.457	5/32	.008	3/8	.173
DCGT-32.51-AL1			1/64		
DCGT-32.52-AL1			1/32		

## DCGT- ... -AL1

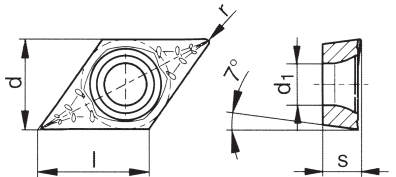
HCK10	COATED					UNCOATED		CERMET	
						W1090	W1095		
●						●			
●						●			
●						●			
●						●			
●						●			



DESIGNATION	l	s	r	d	d <sub>1</sub>
DCGT-21.51-AL2	.305	3/32	1/64	1/4	.110
DCGT-21.52-AL2			1/32		
DCGT-32.51-AL2	.457	5/32	1/64	3/8	.173
DCGT-32.52-AL2			1/32		

## DCGT- ... -AL2

HCK10	COATED					UNCOATED		CERMET	
						W1090	W1095		
							●		
							●		
							●		
							●		

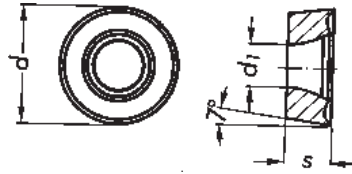


DESIGNATION	l	s	r	d	d <sub>1</sub>
DCGT-21.50.5-AL3	.305	3/32	.008	1/4	.110
DCGT-21.51-AL3			1/64		
DCGT-32.50.5-AL3	.457	5/32	.008	3/8	.173
DCGT-32.51-AL3			1/64		
DCGT-32.52-AL3			1/32		

## DCGT- ... -AL3

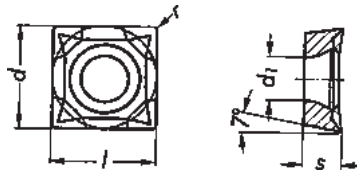
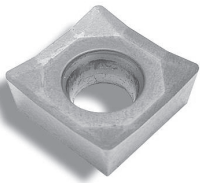
HCK10	COATED					UNCOATED		CERMET	
						W1090	W1095		
●							●		
●							●		
●							●		
●							●		

# WIDIA INDEXABLE INSERTS FOR ALUMINUM



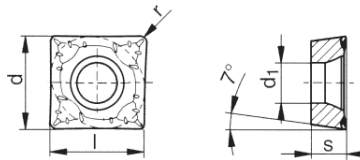
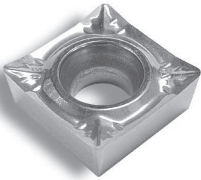
## RCGT- ... -AL1

DESIGNATION	l	s	r	d	d <sub>1</sub>	COATED					UNCOATED		CERMET			
						HCK10								W1090	W1095	
RCGT-0602MO-AL1	--	3/32	--	.236	.110								●			
RCGT-0803MO-AL1	--	1/8	--	.315	.134	●							●			
RCGT-1003MO-AL1	--	1/8	--	.394	.157								●			



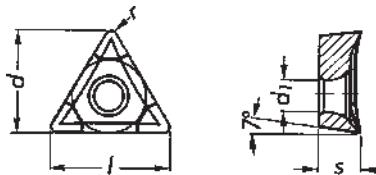
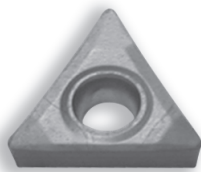
## SCGT- ... -AL1

DESIGNATION	l	s	r	d	d <sub>1</sub>	COATED					UNCOATED		CERMET			
						HCK10								W1090	W1095	
SCGT-32.51-AL1	.375	5/32	1/64	3/8	.173								●			
SCGT-32.52-AL1			1/32										●			
SCGT-432-AL1	.500	3/16	1/32	1/2	.217								●			



## SCGT- ... -AL3

DESIGNATION	l	s	r	d	d <sub>1</sub>	COATED					UNCOATED		CERMET			
						HCK10								W1090	W1095	
SCGT-432-AL3	.500	3/16	1/32	1/2	.217								●			



## TCGT- ... -AL1

DESIGNATION	l	s	r	d	d <sub>1</sub>	COATED					UNCOATED		CERMET			
						HCK10								W1090	W1095	
TCGT-21.50.5-AL1	.433	3/32	.008	1/4	.110								●			
TCGT-21.51-AL1			1/64										●			
TCGT-32.50.5-AL1	.650	5/32	.008	3/8	.173								●			
TCGT-32.51-AL1			1/64										●			
TCGT-32.52-AL1			1/32										●			

